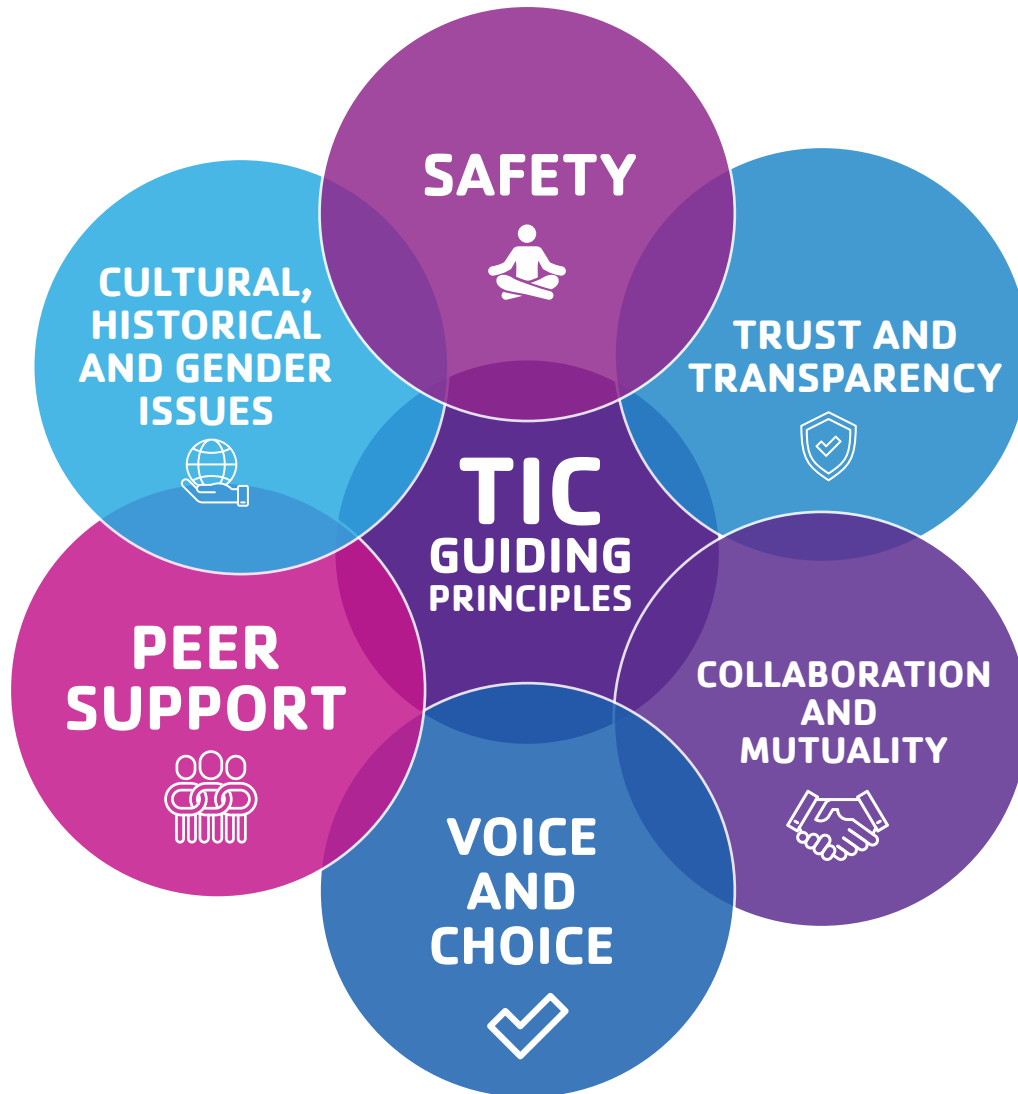


TRAUMA-INFORMED CARE GUIDING PRINCIPLES



Cultural, Historical and Gender Issues

The organization actively moves beyond stereotypes and bias by acknowledging the impact of historical trauma and practicing cultural humility.

Safety

All people feel physically and emotionally safe throughout the organization.

Trust and Transparency

Transparency about why and how decisions are being made builds trusting relationships.

Peer Support

Opportunities are offered for people to learn from each other in order to create a culture that encourages belongingness and promotes recovery, healing and resilience.

Voice and Choice

Choices are provided and others are invited to have voice in decisions based on the belief that all people have strengths to offer.

Collaboration and Mutuality

Relationships are viewed as critical for supporting resilience through meaningful sharing of power and decision-making.